



"Hello, welcome to 25Hoon English "

Interview





---

# INTERVIEW OVERVIEW

## NOTE:

This interview is screen-recorded and will last for approximately **15 minutes.**

You will be given questions that you must answer within a time limit. Kindly read each question carefully and answer as thoroughly as possible. Please also be mindful of the time and manage it effectively so you can complete all questions properly.

# ADVANCE PREPARATIONS

## Webcam setup

1. Teachers are required to have a plain and neat background set-up, preferably white; however, it could also be colorful and kid-friendly for junior students.
2. The background should not be distracting and must not show any unnecessary items. Classes should not be conducted with doors or any other access points visible in the background.
3. The teacher has to have a distance with your camera

## Proper webcam setup



## Inappropriate webcam setup





# ADVANCE PREPARATIONS

## Microphone & Headset setup

1. Please make sure there is no background noise such as a fan, dog, car, white noise, or others.
2. Conducting classes in public places is prohibited.
3. Please adjust your volume properly

## Lighting

To conduct classes effectively, the teacher must be clearly visible to students; therefore, proper bright lighting is required.

## Dress Code

Casual, plain, and collared clothes are recommended.

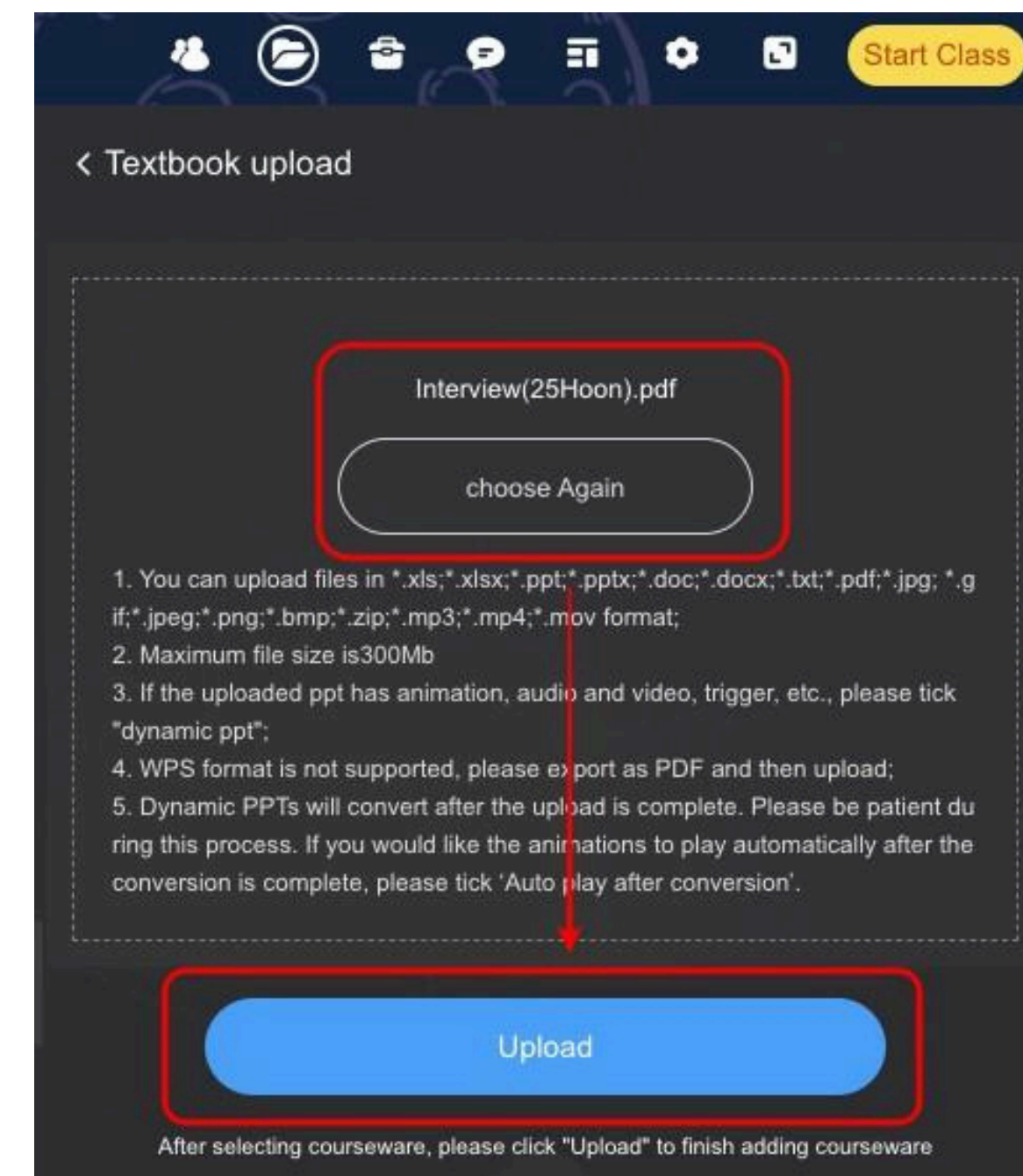
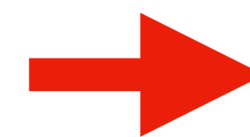
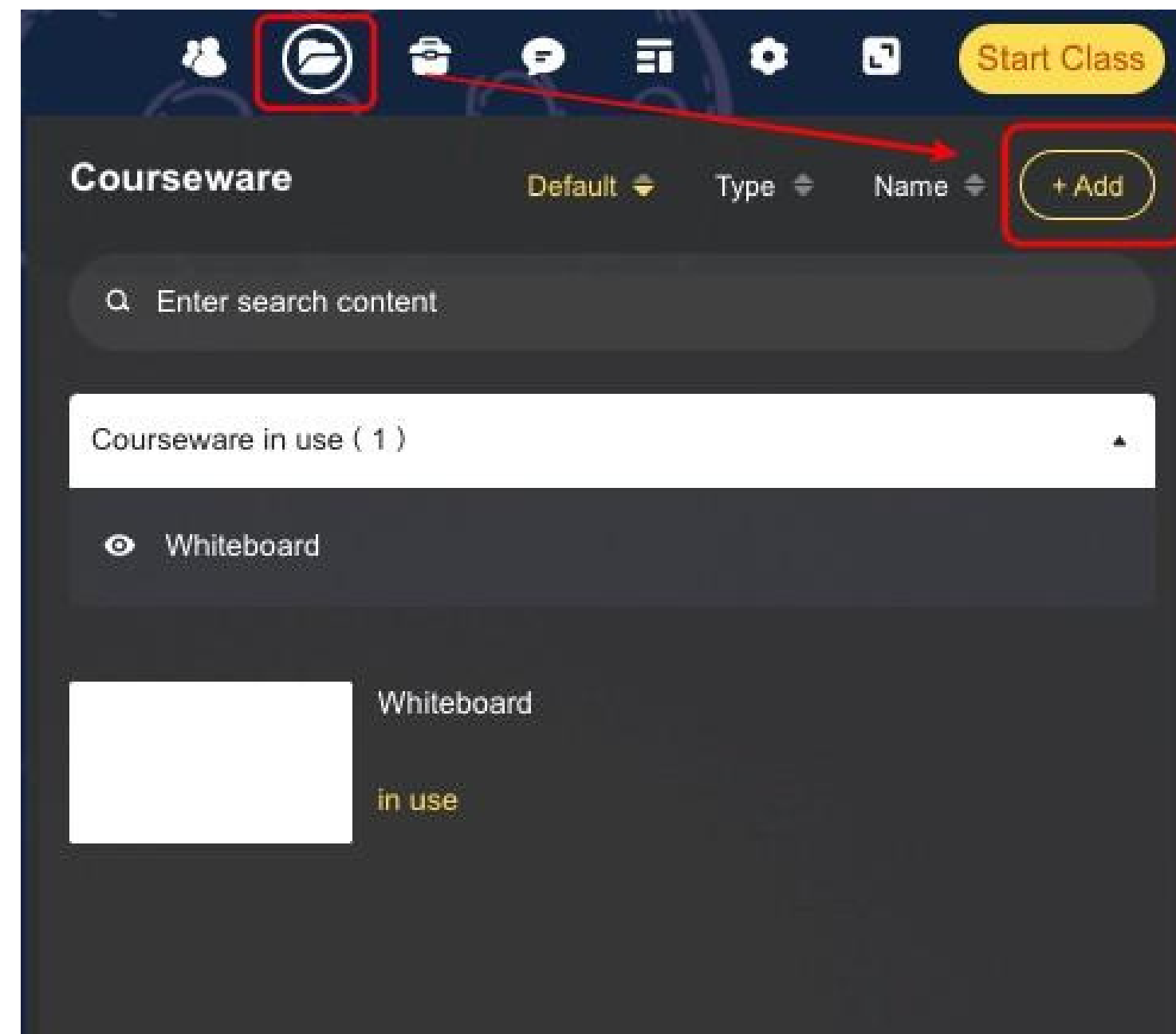




# ADVANCE PREPARATIONS

## Upload this interview question PDF file to the classroom

Uploading Materials via Files Courseware allows teachers to upload materials. By clicking “Add,” teachers can choose and upload the class materials.





# How to start the Interview?

Room number: 804252640 Class will start in 00:01:00

**2. Check Timer**

**3. Start Interview on time**

**1. Upload Interview questions**

Interview

"Hello, welcome to 25Hoon English "

Interview

Courseware

Whiteboard

Interview(A).pdf

in use

Start Class

1 / 14



---

## A. TEACHER INTRODUCTION

1. Please tell us about yourself. You may include your:
  - a. Experiences as an online ESL teacher (If you are currently working as an ESL teacher)
  - b. Specialties/Fortes
  - c. Teaching style
  
2. Why do you apply to 25Hoon?

Note: If you don't have any experience in teaching, you can share your previous or current job experience.



---

## **B. PERSONAL QUESTIONS**

1. How would you describe your goals and objectives as a teacher?
2. What are your personal goals?



---

## C. EXPECTATION

1. What is your target monthly salary?
2. What are the things you want and expect to achieve with 25Hoon?



---

## D. SCHEDULE

1. Are you able to open a fixed evening schedule of at least 2 hours between 6:00–9:00 PM for regular classes?

If yes, please let us know which days you are available.

2. What other schedules can you open during weekdays and weekends?



---

## E. CONDITIONAL QUESTIONS

1. If your teaching experience was from a long time ago, what did you do during the time you were not teaching?
  
2. If you have no ESL online teaching experience yet:
  - How and what did you prepare to become an ESL teacher?



---

## **F. ENGLISH PROFICIENCY ARTICLE DISCUSSION**

Instructions: Please read the article below out loud:

Artificial intelligence has become increasingly influential in modern society, with many companies, educational institutions, and organizations utilizing advanced technologies to improve communication, productivity, and learning experiences. In several countries, schools have started incorporating artificial intelligence into classrooms to assist students with pronunciation practice, personalized activities, and research tasks. However, some educators have expressed concerns regarding excessive dependence on technology, believing it may negatively affect students' critical-thinking and interpersonal communication skills...



---

## F. ENGLISH PROFICIENCY ARTICLE DISCUSSION

...At the same time, artificial intelligence continues to raise important discussions among experts and educators, as its rapid development brings both opportunities and challenges in education, work, and daily life, requiring responsible, ethical, and balanced use to ensure its benefits are maximized while minimizing potential risks.

2. Answer the following questions based on the article you have read

a. How is artificial intelligence being used in companies and educational institutions today?

b. What concerns do some educators have about the use of artificial intelligence in learning?

c. Why is it important to use artificial intelligence in a responsible and balanced way?



---

## G. FINAL QUESTIONS

When answering these questions, kindly expound as much as you can.

1. Since most 25Hoon students are children, how do you adapt your teaching techniques for young learners with different English levels?
2. How do you maintain student engagement and adjust your teaching approach when a lesson is not going as planned (e.g., the student is bored, confused, or unresponsive)?
3. What strategies do you use to ensure students understand and retain new vocabulary and sentence patterns effectively?
4. How do you adjust your teaching style when handling fixed-schedule regular students compared to flexible or one-time classes?
5. Are you familiar with the Oxford Let's Go and Oxford Discover series?



---

Thank you for participating in our interview. We will review your video and answers and get back to you via email with the results within 2–4 business days. You will receive an email regardless of the outcome.

Should you proceed to the next step of the hiring process, the guidelines and instructions will be included in the email we will send.

If you have questions, please do not hesitate to contact us via e-mail.

Email: [recruitment@25hoon.com](mailto:recruitment@25hoon.com) Thank you and good luck.

25Hoon English

RecruitmentTeam

---